



# SMD601 Plus PROFILING

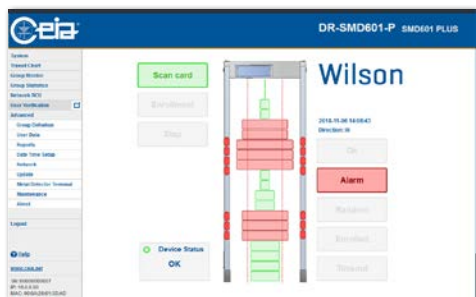
## LOSS PREVENTION METAL DETECTOR

### SYSTEM OVERVIEW

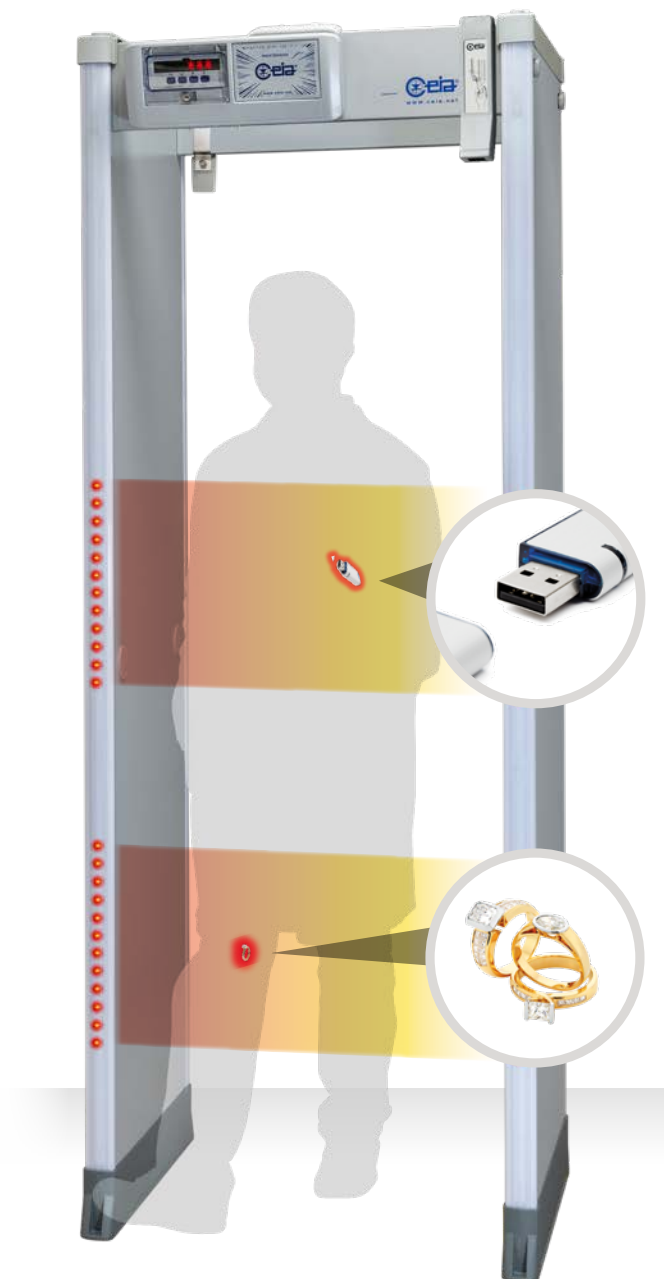
- Provides an inspection of personnel to prevent removal of critical metallic objects from warehouses or production facilities
- Discovers very small metallic items while ignoring non-removable metals
- Detects items carried anywhere on and inside the body

### BENEFITS

- Greatly reduces losses through unprecedented detection levels and deterrence
- Increased throughput by pinpointing of alarm locations
- Extremely low nuisance alarm rate at high sensitivities
- Improves privacy with non-invasive search
- Random selection capability included
- Stand-alone solution (no PC or Server required)
- Simplified networking implementation (for multi-checkpoint requirements)



AS PEOPLE TRANSIT THE SYSTEM, THEIR METAL CONTENT IS COMPARED TO A SAVED PERSONAL PROFILE



www.ceia.net

THREAT DETECTION THROUGH ELECTROMAGNETICS



## SMD601 Plus PROFILING: HOW IT WORKS

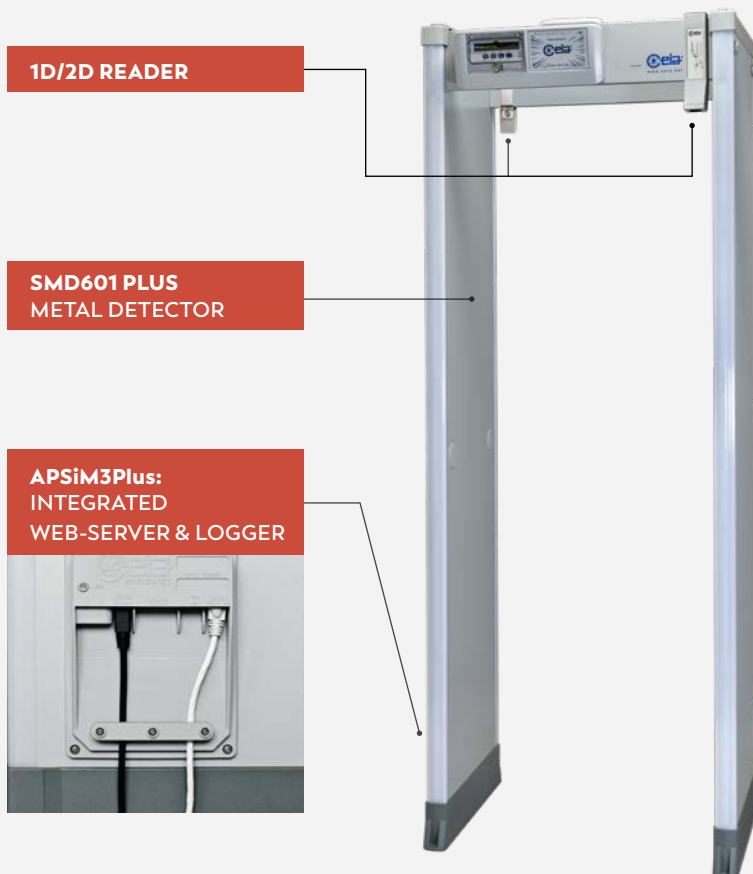
### QUICK, ACCURATE ANALYSIS OF ALL PARTS OF THE BODY OF PEOPLE IN TRANSIT

- The superior uniformity of the electromagnetic field of the SMD601 Plus Metal Detector provides very consistent metal detection readings on every transit.
- This ground-breaking capability allows for individual creation of personal metallic signatures or metallic "profiles".

### TRUE METAL CONTENT PROFILE FOR THE PERSON BEING SCREENED





- These profiles can be taken while the individual may be wearing non-removable items, like dental works, medical implants, wedding rings and piercings, and are stored in the SMD601 Plus embedded data base.
- These personal profiles are used as a reference for every transit carried out by an individual, allowing detection of small targets while ignoring non-removable personal objects.

### SYSTEM LAYOUT



ORDERING INFORMATION	P/N
SMD601 Plus Metal Detector	SMD601Plus/PZ
1D/2D Barcode Reader	1D/2DReader/P
APSiM3Plus	APSiM3Plus/P

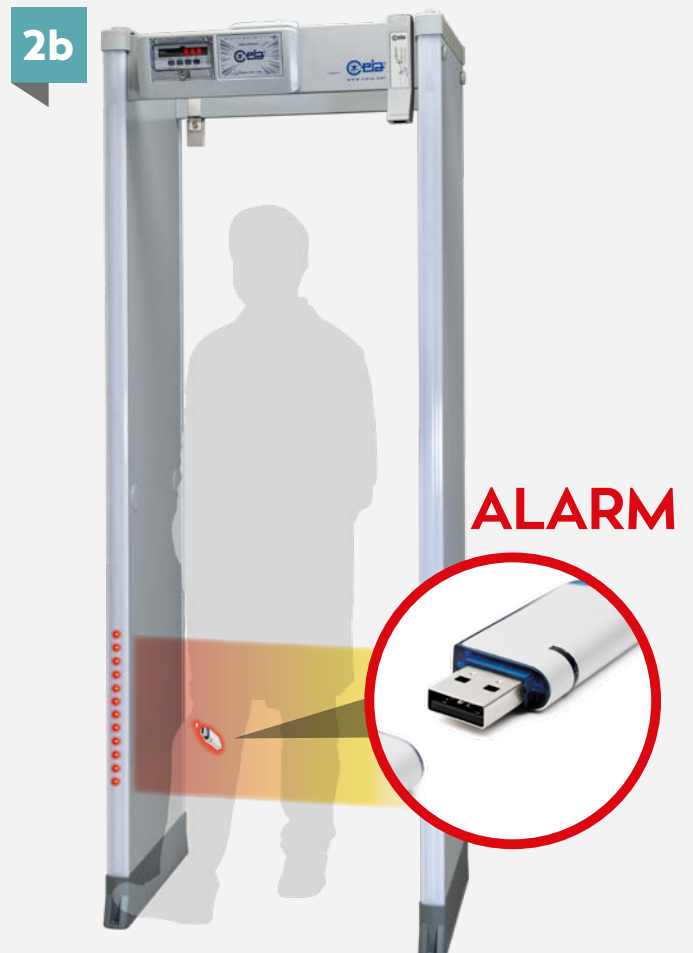
  

OPTIONS	P/N
User cards 	Profiling-card-100
Enrollment cards 	Enroll-card-10
	EZ-Enroll-card-10
1,000 labels kit with 2D barcode 	2DLABEL-1000
MDNA - Metal Detector Network Appliance	MDNA
Test kit Precious Metal	V/UHS-LPPM-KIT
Test kit Information Technology	V/UHS-LPIT-KIT

## SCREENING SEQUENCE

### HIGH SENSITIVITY SCREENING OF PEOPLE WITH OR WITHOUT IMPLANTED METAL OBJECTS

- 1** A profiled user presents their badge to the barcode reader.
- 2a** **THE USER TRANSITS THROUGH THE METAL DETECTOR**  
The Metal Detector ignores profiled non-removable metal objects and does not alarm.
- 2b** **THE USER TRANSITS THROUGH THE METAL DETECTOR WITH A TARGET OBJECT**  
The target is detected and the Metal Detector shows its position.



The **SMD601 Plus Loss Prevention Metal Detector** prevents the theft or accidental removal of metallic objects.

As people transit the system, their metal content is compared to a saved personal profile.



### EXAMPLES OF TARGET ITEMS

- ✓ ELECTRONICS
- ✓ PRECISION MECHANICS
- ✓ JEWELLERY
- ✓ PRECIOUS METALS



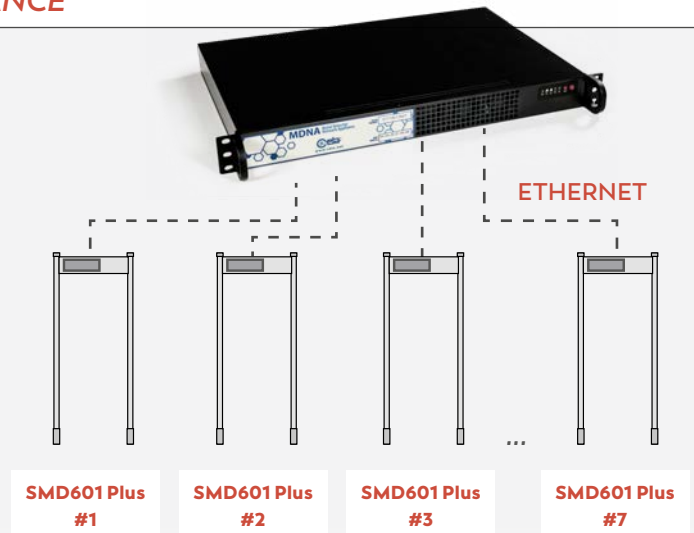
### EXAMPLES OF OBJECTS THAT CAN BE PROFILED

- ✓ MEDICAL IMPLANTS
- ✓ DENTAL WORKS
- ✓ WEDDING RINGS
- ✓ EAR RINGS
- ✓ PIERCING



### MDNA: METAL DETECTOR NETWORK APPLIANCE

- Share User Profiles between up to 50 networked Metal Detectors
- Allows Users to transit through any SMD601 Plus performing a single global enrollment
- Keeps a redundant copy of the User Electromagnetic Profiles
- 7 Ethernet ports to directly connect up to 7 metal detectors without additional Ethernet switches
- Full web-based User interface
- Automatically joins directly attached SMD601 Plus



CEIA - Zona Industriale 54, 52041 Vicinaggio - Arezzo (ITALY)  
 T +39 0575 4181 • F +39 0575 418298 • E infosecurity@ceia-spa.com

www.ceia.net

