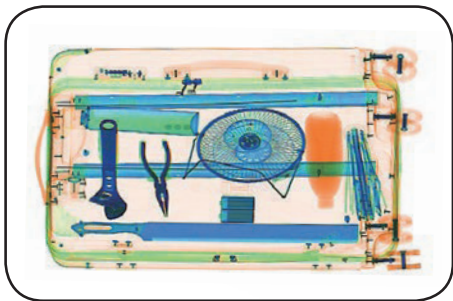


Dual Energy X-ray Inspection System

ZKX100100



Highlights

- Adjustable belt speed
- Large baggage and parcel screening
- Folding design for easy loading

Standard

- Fingerprint console board
- Dual monitor operation desk
- Bi-directional scanning

Optional

- Intelligent Analysis Function
- Passenger-package Linkage
- Anti Rat Device
- Energy Saving Function

Introduction

ZKX100100 X-ray inspection system increases the operator's ability to identify potential threats; the device is designed to scan the objects up to a size of 100 × 100cm.

ZKX100100 uses reliable high quality dual energy X-ray generator. With the superb image algorithm, ZKX100100 could offer clear scanning image, which allows operators to identify potential threat items visually. Also, ZKX100100 equipped with a lowered conveyor height to make it easier to put the luggage on.

ZKX100100 has innovative biometric identify function for operators, improving the security of system and preventing operator from forgetting password.

With ergonomic modern design, ZKX100100 could help operators to identify suspicious items fast and accurately.

Specifications

Tunnel Size(W*H)	1000*1000(mm)
Speed	0.2-0.4m/s (adjustable)
Height of Transmission Belt	387 mm
Maximum Load	200 kg (Adequate distribution)
Wire Resolution	38 AWG
Space Definition	Horizontal Φ 1.0mm \ Vertical Φ 2.0mm
Penetrate Definition	32 AWG
Penetration	30 mm steel board
Monitor	21.5 inch LED * 2
System Function	High density alert, Explosive/ Drug auxiliary detect, TIP, Luggage counter, date/time display, User management, Training.
Film Safety	ASA/ISO1600 standard of film safety

X-ray System

Tube Voltage	80-160kV (adjustable)
Tube Current	0.3-1.0 mA(adjustable)
Cooling	Seal oil cooling / 100%
Radiation Leak Dosage	0.2 μ Gy/h (5cm from the surface)

Installation Specification

Dimension(L*W*H)	3384*1407*1866(mm)
Dimension with packing(L*W*H)	2600*1520*2020(mm)
Console Desk Dimension(L*W*H)	1320*900*320(mm)
Weight with Packaging	Tunnel: 1150kg Console Desk:135kg
Power Consumption	1 kVA
Noise	55.8 dB(A)

Dimension

