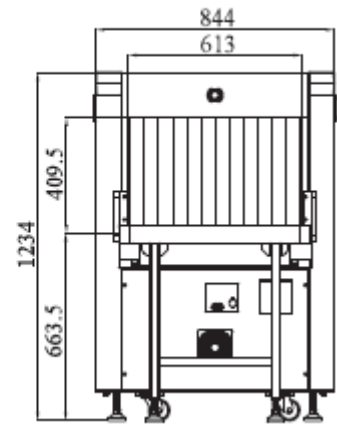
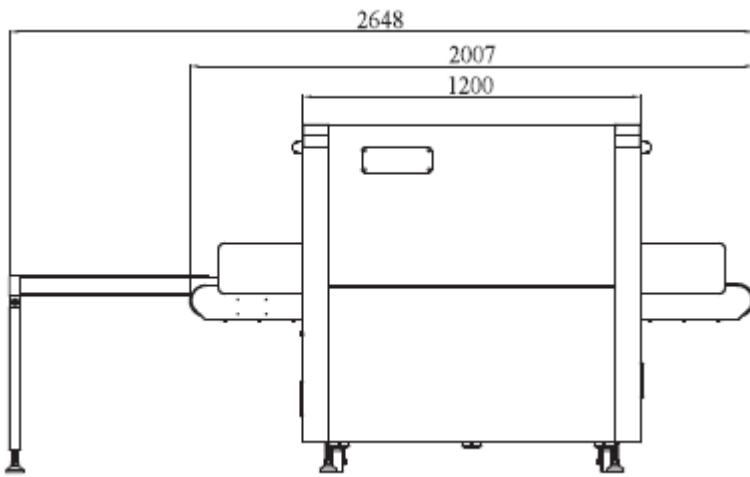


SR. NO	DESCRIPTION	
1.	<p>X-Ray Baggage Scanner Model: Trust Safety Solutions 6040 Dual Energy</p> <p>(Tunnel Size:-600x400mm)</p> <ul style="list-style-type: none"> ✓ Outfeed Table Included ✓ Monitor Included ✓ Installation and Training (1day) ✓ One Year Warranty <p>The Trust Safety Solutions 6040 (TSS 6040) is specifically designed to meet the needs and applications of airports, prisons, railways and subways, stadium, courts, parcels service or wherever high security is required.</p> <p>Features:</p> <ul style="list-style-type: none"> • Linux operation system • ARM cpu • Digital signal and processor • Continuous working 10000 hours above • Energy saving design • High penetration • Good quality images • One key turn off 	 

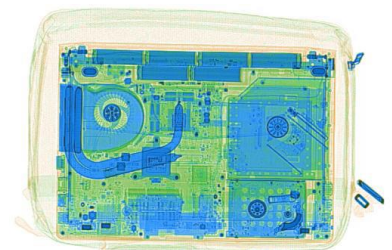
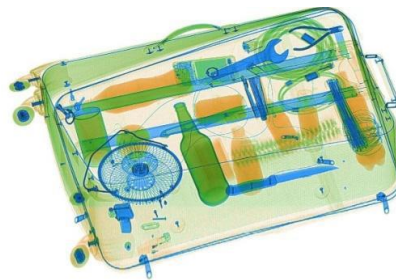
Applications:

Airports	Factories (to find needle in clothing, shoes, bags)	Embassies	Hotels
Transport terminals	Security checkpoints	Schools	Prisons
Buildings	Courthouses	Convention centers	Govt. Organisations

Outlook Size:



Scanned Images from the our Baggage Scanner ---



SPECIFICATIONS:

Physical Specifications

Unit weight	450 (kgs)
Product Size	2648* 844 * 1234mm (L x W x H)
Tunnel Size	600* 400mm (width x height)

General Specifications

Wire Resolution	Typical AWG40
Penetration Resolution	Typical AWG34
Spatial Resolution	Vertical 1.0mm; Horizontal 1.0 mm
Penetration	Typical 30mm
Resolution of organic matter	1 - 120 mm
Grayscale and mixture resolution	1-40mm
Resolution of inorganic objects	0.2-14mm
X ray dose per each inspection	≤ 2.5 μGy
Boundary Leakage	≤ 0.5 (μGy/h)
S/N Ratio	< 60dB
Conveyor Speed	0.2 (m/s)
Conveyor Max Load	180 (kgs)
Power Consumption	0.5KW
Leakage current	≤ 5.0mA
Film Safety	Guarantee ASA/ISO 1600 Film

X-ray Generator

X ray generator	140KV, Oil Cooling, From Bottom To Top
Electric Roller	One-phase
Computer	Hard drive: 500G, Storage : 1G

Software System

Self-test after power on	With the function of fault self-check, automatically judge the fault and prompt the fault code information in time
--------------------------	--

Image processing	With the function of Color/ B W, negative, high/low penetration, organic /inorganic stripping, general enhancement, and pseudo color, etc.
Image Recall	30 preceding images recallable.
The number of images stored	Up to 1000 images stored automatically
Real-time curve	The real-time curve can be used to detect whether the acquisition system and components work normally.
Time setting	System time can be set
Probe setting	It can realize the manual deletion of the low and low energy detection board dead pixels, and display the deleted dead pixels in the display area.
Ray source setting	There are two source and analog source control modes, the source parameters of the digital source can be set.
Alarm system	
Troubleshooting	It can realize whether the components such as the entrance and exit light barrier, side panel switch, emergency stop switch and light source are normal, and display the standard value and current value of the detection voltage
Image setting	
Software registration	It can realize software registration function and has serial number, registration code, registration status and system time information display.
User login	Log in by entering different user name and passwords, only when logging in can you make other settings.
User management	You can add, delete, edit the user name and password, set the user level to restore the deleted user.
Authority management	
Log management	
About	
T I P report	The report can be generated by the tip operation after the tip insertion function is turned on, and the content of the report: user name, number of tip insertions, number of tags, false positive rate, probability of detection, probability of false positives.
Tip management	It can be set to enable and disable the insertion of dangerous goods, and can set the identification time, Prompt time, insertion frequency, proportion of single items inserted into dangerous goods, add tip files and delete files.
Document management	It can query, open, and export the checked image.
Function setting	It can set log level, save the file time, whether to open the training function and setting the smart roller.
Data setting	Display system working hours, the total working hours of the ray source, the total number of system baggage and packages, and the total number of baggage packages this time, and clear the above data.
System parameter setting	It can select the exported data, pictures, and backup directory, select and adjust the motor type, detector type, whether to enable the debug mode, model, and gain, enter the corresponding IP address on network connection to realize sharing function, and have corresponding software to achieve system upgrade.

Operating Environment

Operation temperature/Humidity	5°C-40°C / 0%-90%
Storage Temperature/Humidity	-20°C - 60°C / 10%-90%
Operation Power	220VAC(±10%-15%) 50±3Hz

Compliance:

• ISO19001 ; ISO14001 ; ISO27001
• CE , ROHS , FCC , REACH , USA , FDA
• Health Inspection Report
• Computer Software Copyright Registration Certificate
• Software Product Registration Certificate
• Radiation Safety Certificate from Ministry of Public Security

