

DS-3E0106P-E/M 4-Port Unmanaged PoE Switch

DS-3E0106P-E/M switches are layer 2 unmanaged PoE switches, providing advanced PoE power supply technology on the basis of high-performance access to ensure stable data upload. The switches support long range function.



Key Feature

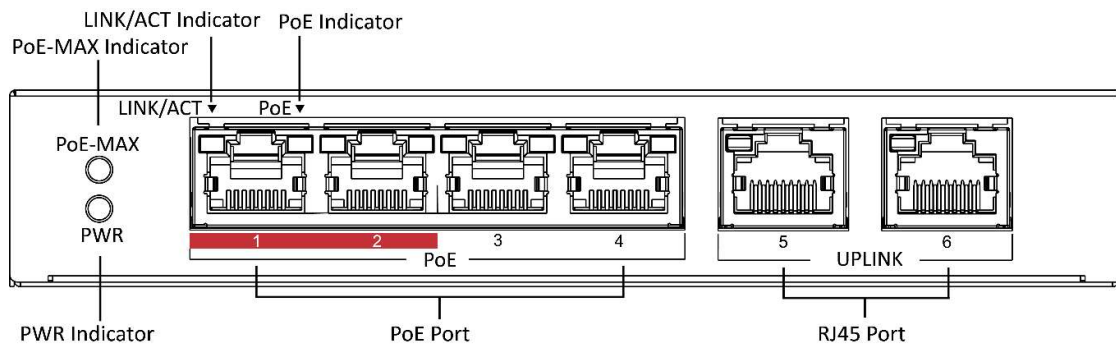
- 4 x 10/100Mbps PoE ports, and 2 x 10/100Mbps RJ45 ports.
- IEEE 802.3at/af standard for PoE ports (Max. 35 W PoE output).
- IEEE 802.3, IEEE 802.3u, and IEEE 802.3x standard.
- 6 KV surge protection for PoE ports.
- Up to 300 m long-range transmission.
- Wire-speed forwarding.
- Store-and-forward switching.
- Solid high-strength metal shell.
- Reliable fan-free design.

Specification

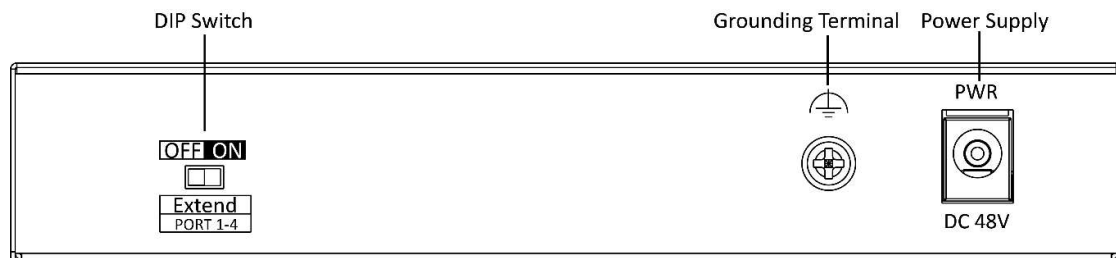
Model		DS-3E0106P-E/M
	Port number	4 x 10/100Mbps PoE ports, and and 2 x 10/100Mbps RJ45 ports
	Port type	RJ45 port, full duplex, MDI/MDI-X adaptive
	Standard	IEEE 802.3, IEEE 802.3u, IEEE 802.3x
	Forwarding mode	Store-and-forward switching
	Working mode	Standard mode (default), Extend mode
Network parameters	High priority ports	Ports 1 and 2
	Ports for long-distance transmission	Ports 1 to 4
	MAC address table	4 K
	Switching capacity	1.6 Gbps
	Packet forwarding rate	0.8928 Mpps
PoE power supply	Internal cache	768 Kbits
	PoE standard	Ports 1 to 4: IEEE 802.3af, IEEE 802.3at
	PoE power pin	Ports 1 to 4: Ethernet cables 1/2/3/6 and 4/5/7/8 provide power supply simultaneously.
	PoE port	Ports 1 to 4
	Max. port power	Ports 1 to 4: 30 W
Dialing function	PoE power budget	35 W
	Long range	Ports 1 to 4: up to 300 m.
General	Shell	Metal material, fan-free design
	Gross weight	0.52 kg (1.15 lb)
	Net weight	0.265 kg (0.58 lb)
	Dimension (L x H x D)	145 mm x 68.45 mm x 25.6 mm (5.71" x 2.69" x 1.01")
	Operating temperature	-10°C to 40°C (14°F to 104°F)
	Storage temperature	-40°C to 85°C (-40°F to 185°F)
	Operating humidity	5% to 95% (no condensation)
	Storage humidity	5% to 95% (no condensation)
	Power supply	48 VDC, 0.8 A
	Power consumption in idle	< 5 W
	Max. power consumption	38 W
Approval	Power source	38 W
	EMC	FCC (47 CFR Part 15, Subpart B); CE-EMC (EN 55032: 2015, EN 61000-3-2: 2014, EN 61000-3-3: 2013, EN 55024: 2010 +A1: 2015); RCM (AS/NZS CISPR 32: 2015); IC (ICES-003: Issue 6, 2016)
	Safety	UL (UL 60950-1); CB (IEC 60950-1:2005 + Am 1:2009 + Am 2:2013); CE-LVD (EN 60950-1:2005 + Am 1:2009 + Am 2:2013)
	Chemistry	CE-RoHS (2011/65/EU); WEEE (2012/19/EU); Reach (Regulation (EC) No 1907/2006)

Physical Interface

Front panel:



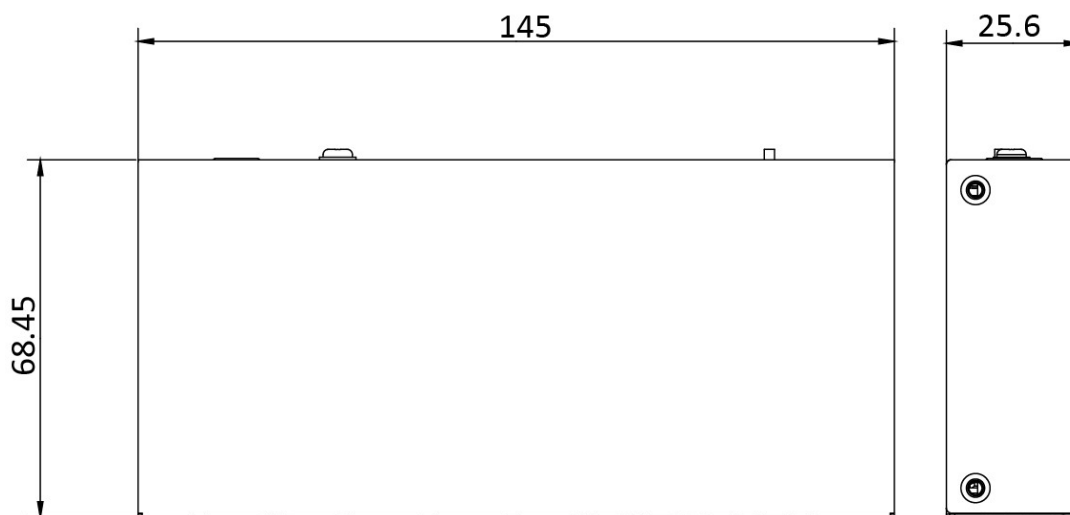
Back panel:



Available Model

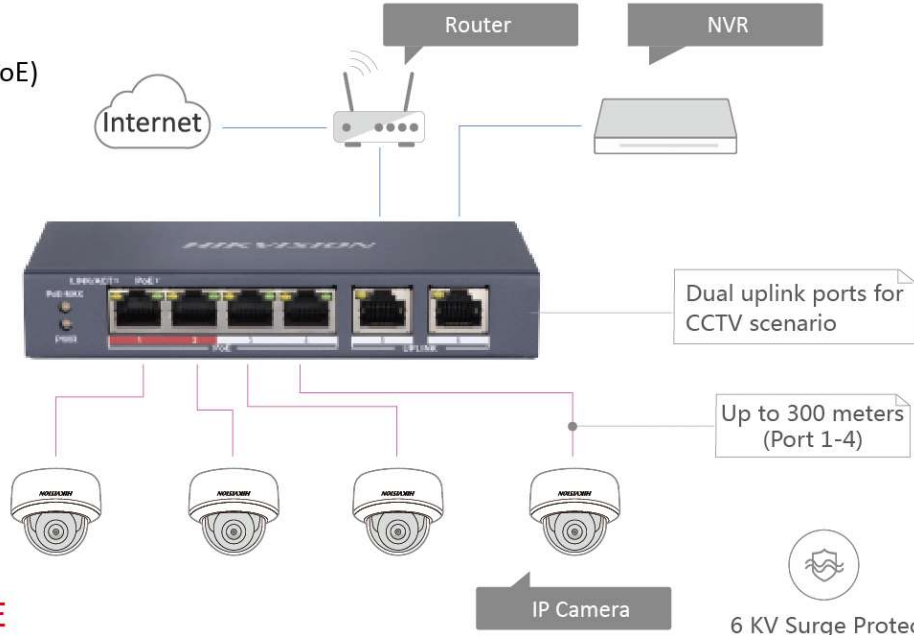
DS-3E0106P-E/M

Dimension (unit: mm)



Typical Application

— Data
— Power+Data(PoE)



4-Port 10/100M PoE

10/100M Unmanaged PoE