



Godrej Enterprises Group

Key to a Secured Premise with Key Management System Now Integrated with **Genetec™**

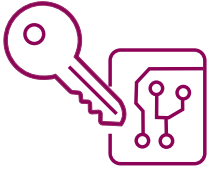


Key Management System

Secure, Traceable, and Intelligent Key Management System

Key Management System redefines how organizations control access to critical keys. With RFID technology and real-time monitoring, our system ensures that only authorized users can access keys – with complete visibility and accountability.

How does the Key Management System work?



Smart-key identification

Individually Tagged
Smart-Key / Key Fob
Unique identity for Each Key



Authorised access only

Access via RFID, fingerprint,
pin or any combination.
only authorized users
can retrieve keys



Real-time Monitoring

LCD display shows every activity
visual traceability of key usage



Transaction logging

Time-Stamped Key Access Logs
Secure Audit Trail After
Every Transaction

Why Choose Our Key Management System?

1. Individually Identified Smart-Key Fobs
Each key is attached to a unique smart fob, digitally linked to your access control system – ensuring only the right person access the right key.
2. Multiple Access Options
Grant Access through:
 - RFID Cards
 - PIN codes
 - Fingerprint
 - Or a dual-authentication method – combining security with flexibility.
3. Real – time monitoring:
 - Built-in LCD screen
 - Live activity tracking
 - Access status updates
 - Instant alerts for unauthorized access attempts
4. Automatic Logging and Audit Trails:
Every key transaction is time-stamped and recorded, creating a tamper-proof digital audit trail for compliance and audit.
5. Tagging Free
No tagging required on key cabinet and any key can be placed in any slot, making it hassle free for the users
6. Internal Battery Backup
Enables uninterrupted operation in the instance of power failure upto 4 hours.

Applications



Hospitals



Government Offices



Datacenter



Banks



Corporate Offices

What Genetec adds to KMS:

Integrated Software Features

- Automatic Sync of Card User and System User Data to KMS
- Access through exit readers is automatically restricted when sensitive keys are withdrawn from the KMS, ensuring enhanced security control.
- Automatically grant or restrict access to specific facility zones or readers based on the authorized deposit or withdrawal of keys from the KMS.



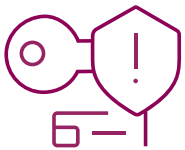
Integrated Access Control System

Automatically sync demographic information of cardholders and system users to the KMS



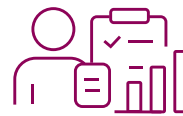
Centralized Monitoring

Live Key Status | Event Alerts on Genetec Platform



Enhanced Security

Restrict Access Upon Removal of Critical Keys
Keys Checked Out | Overdue Keys
Late Key Returns



Enrolment & Reporting

Key, User Transaction Reports (via Genetec)
Audit Trail, Access Rule Audit Trail

Generate Transaction Reports

Formulates access history of each key and user. Generates detailed reports and logs up to 25000 transactions within the cabinet.

Tamper Alarm

Alerts in case of tampering or intrusion by an unauthorised user.

Automatic Lock

It automatically locks all key access in case of battery or power fail

7" Touchscreen Key Management System



Features and Specifications

Local User Interface	7" Touch Screen, graphical UI
Dimensions Touch Screen	230x230x70
Key Dispensing	Option selection + search* by Name
Key Identification	Audio Prompt, MIMIC Display slot ID & Blinking LED at each key
Key Authentication	Flexible Single For Dual for each key
Time Restrictions	Multiple, Flexible time zones for keys, users
Local Transaction Buffer	100000 (at console)
User/Key Configuration	Any External computer with browser for embedded ser ver
Reports	Limited available OnScreen + Any External browser
Configuration + Transaction Database	Internal embedded server
LAN Interface	For remote administration
Power	12V with 4hr backup
Snapshot Facility	Built-in camera for visual logging

